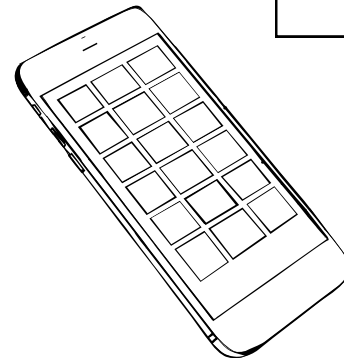
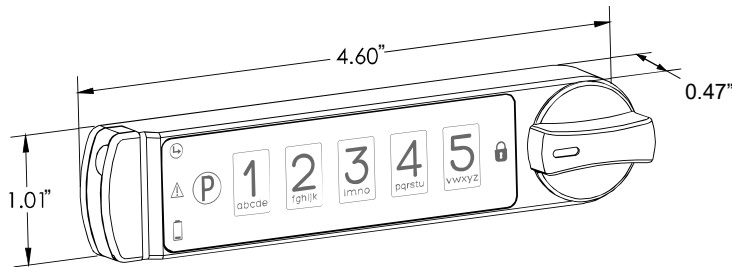


MicroIQ Mobile

BLE Core Replacement

CB
series



Installation and Set up

- Wireless installation takes less than 5 minutes
- Easily learn in hundreds of users
- Assign access parameters for each lock, employee, group, and location
- Direct replacement of major manufacturers core locks
- Secured coin cell battery is conveniently accessed from the outside of the lock
- Operates in station mode (repeated use) or locker mode (single use)

Technology

- Access with your existing smartphone
- Manage access with MicroTraq, ProxTraq and MobileTraq apps/portals
- Enterprise security administration from a single portal
- Generate audit trails to track user activity and lock/unlock attempts
- Remote enrollment of users

Specifications

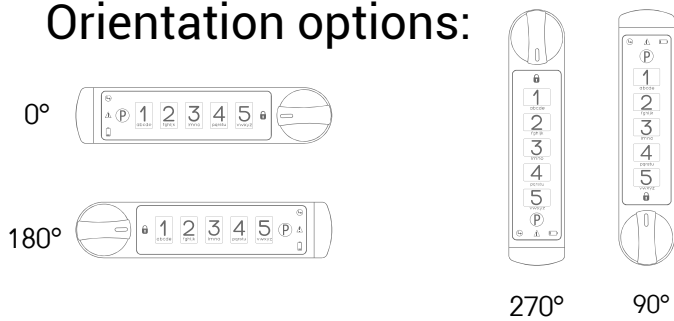
Dimensions: 4.6"w x 0.47d x 1.01"h	Power: CR2032 coin cell battery
Network data communication: Bluetooth	Battery life: 1-2 years
Compatible smartphones: All common standards including Android 5.X, IOS 11 or higher.	Operating modes: (1) <u>Station Mode</u> : The lock is accessed by one or more users repeatedly. The lock memory retains codes until these codes are intentionally erased or replaced. (2) <u>Locker Mode</u> : For unassigned lockers or other storage units. The user chooses any available locker and connects to a phone or enters a one-time self-selected code. This code or phone is erased after the user unlocks the lock.
# of Users: Each lock can store hundreds of users	Keypad: 5 Digit
Levels of access: master (6 digits), supervisor (3-6 digits), and user (3-6 digits)	Operating temperature: 32° - 122°
Direct replacement for: Haworth, Herman Miller, HON. Hudson, Kimball, Knoll, Steelcase, Timberline, Wesco and	Storage temperature: 14° to 158°
Knob rotation: clockwise or counterclockwise; 90 or 180 degrees	Operating moisture: 20% - 80% Rh
Locking position: one or two	Interference: Immune to physical shock and magnetic field
	Cleaning: withstand bleach and chemical cleaners

Spindles and Tumblers Configurations:

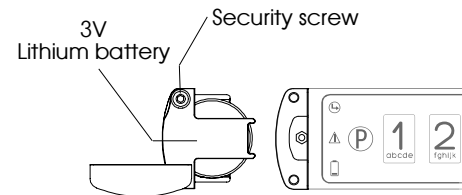
Manufacturer	Core Number Replaced	Driver or Retaining Tumbler
Herman Miller	UM226-UM427 M001-M165	LL226-LL427 ES101-ES200
Haworth	HW001-HW300 SL001-SL300	ML401-ML700 ES101-ES200 MI001-ML300
Knoll	H6001-H6250, K001-K250	
Hudson	ES101-ES200	
Steelcase	FR and XF series	

Manufacturer	Core Number Replaced	Driver or Retaining Tumbler
Olympus	R Series CCL 600 Drawer 996/997 Latch Lock	
Kimball	001-500	
Timberline	351TA - 999TA 10TC - 999TC 100TB-999TB	
Hon	101E - 225E	
Wesko	W401 - W630 T601 - T750 P1 - P180	

Orientation options:



Power:



Lock management via ProxTraq Bluetooth and cloud database:

