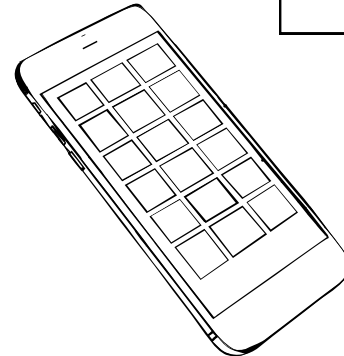
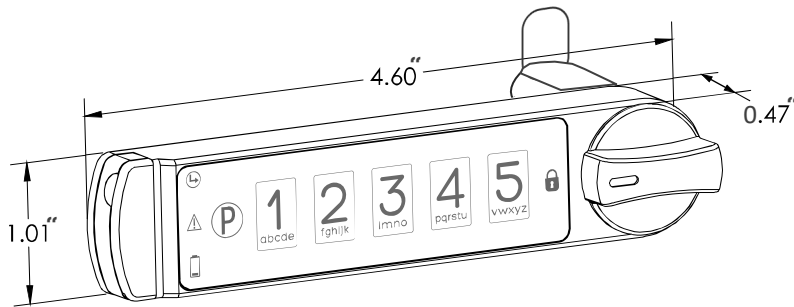


MicroIQ Mobile

BLE Cam Replacement

UB
series



Installation and Set up

- Wireless installation takes less than 5 minutes
- Easily learn in hundreds of users
- Assign access parameters for each lock, employee, group, and location
- Fits into standard double-D key lock holes
- Secured coin cell battery is conveniently accessed from the outside of the lock
- Operates in station mode (repeated use) or locker mode (single use)

Technology

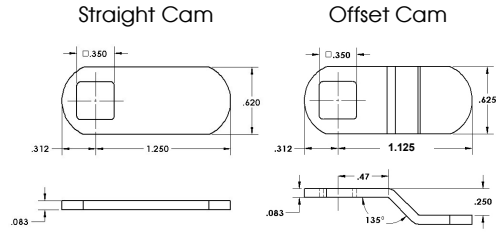
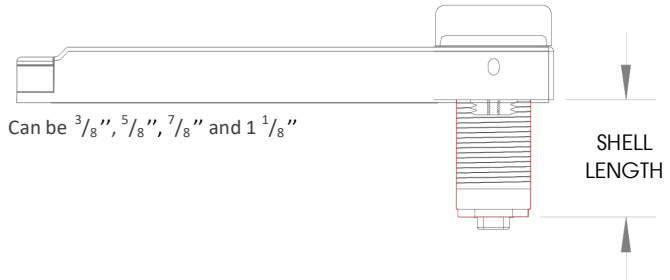
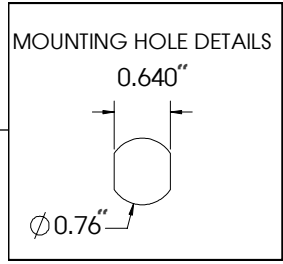
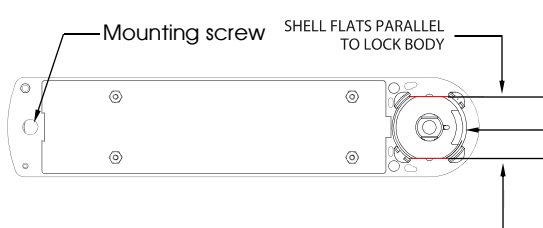
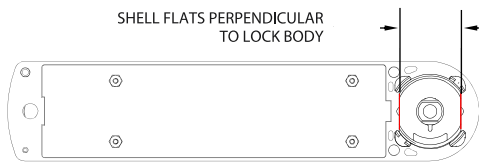
- Access with your existing smartphone
- Manage access with MicroTraq, ProxTraq, and MobileTraq app/portals
- Enterprise security administration from a single portal
- Generate audit trails to track user activity and lock/unlock attempts
- Remote enrollment of users

Specifications

Dimensions: 4.6"w x 0.47d x 1.01"h	Power: CR2032 coin cell battery
Network data communication: Bluetooth	Battery life: 1-2 years
Compatible smartphones: All common standards including Android 5.X, IOS 11 or higher.	Operating modes: (1) <u>Station Mode:</u> The lock is accessed by one or more users repeatedly. The lock memory retains codes until these codes are intentionally erased or replaced. (2) <u>Locker Mode:</u> For unassigned lockers or other storage units. The user chooses any available locker and connects to a phone or enters a one-time self-selected code. This code or phone is erased after the user unlocks the lock.
# of Users: Each lock can store hundreds of users	Keypad: 5 Digit
Levels of access: master (6 digits), supervisor (3-6 digits), and user (3-6 digits)	Operating temperature: 32° - 122°
Locking Mechanism: Cam (see reverse side for details)	Storage temperature: 14° to 158°
Shell length: 3/8", 5/8", 7/8", 1 1/8"	Operating moisture: 20% - 80% Rh
Knob rotation: clockwise or counterclockwise; 90 or 180 degrees	Interference: Immune to physical shock and magnetic field
Locking position: one or two	Cleaning: withstand bleach and chemical cleaners

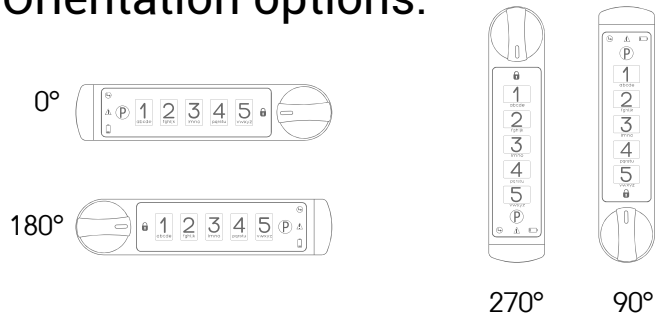


Mounting details:

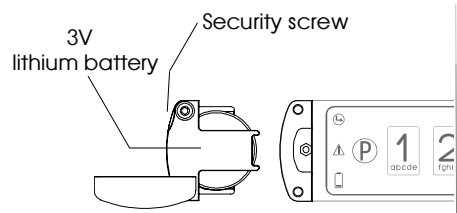


1. Customer can use preferred cam
2. Adapter available for Eurolock applications

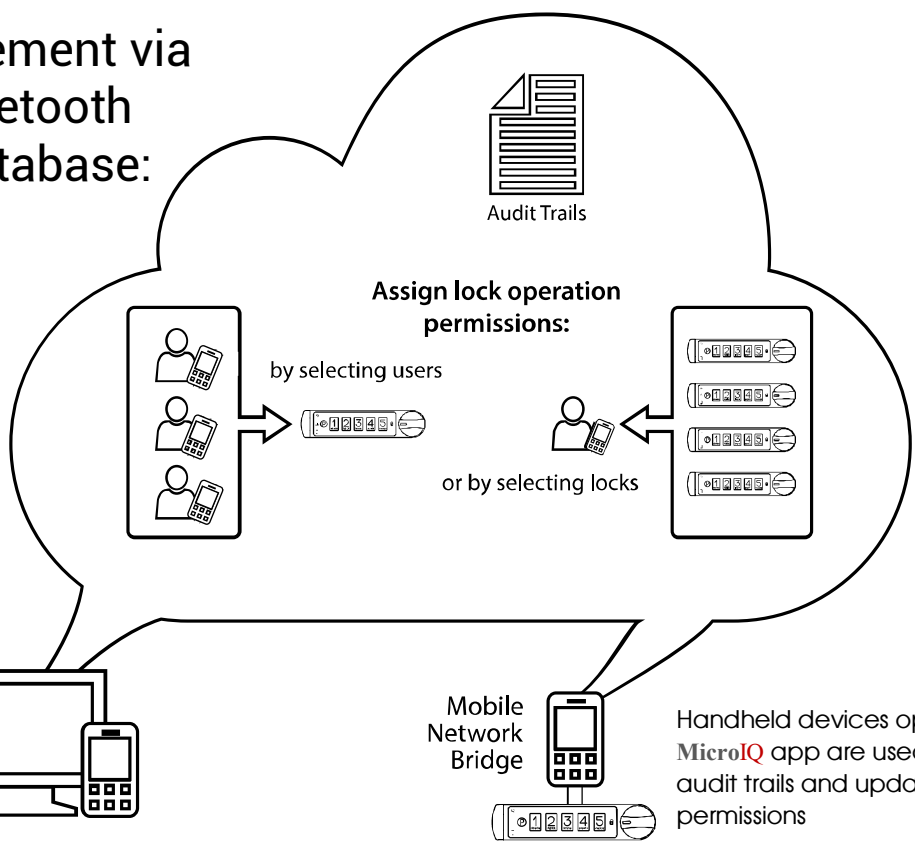
Orientation options:



Power:

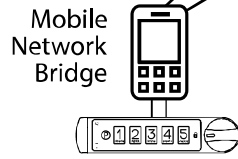


Lock management via ProxTraq Bluetooth and cloud database:



Remote administration:

- Manage locks
- Manage users
- View audit trails



Handheld devices operating the **MicroIQ** app are used to upload audit trails and update access permissions